



The dramatically proportioned fireplace links livable space and the volume above as the hood and the chimney extend upward with architectural definition. Depth of detailing, for a total of eighteen inches from the front of the mantle to the flagstone surround, creates an interplay of light and shadow—a focal point to the room that bridges the ornamentation of traditional with the simplicity of contemporary.

By contrast, the family-cum-dining-cum-kitchen is more modest in scale and reflective in style, with a coffered ceiling for restrained ornamentation. The arch over the window, the long cabinets with inset doors and the latch knob all recall an earlier time — “the latch knob was the kind my grandmother had in her house,” Mr. Morris says. “To emphasize the thirties and forties look, I used 3 x 6 white tile in a brick pattern and the bull nose on the countertops.” While the bead board wrapping the island was a standard building material in the early part of the century, the granite countertop is a bow to functional living in today’s world.

And function is the operative word for this wing of the house. The kitchen gives way to the eating area, then the living area with a cabinet housing a television and bookshelves above. The space between the cabinet and bookshelves is open to the adjoining small office, which is next to the laundry room—the height of planning for the multitasking that takes place here. Put the pot of pasta on the stove while catching the news on television. Throw the laundry in the washer and catch up on e-mail while making sure the pot doesn’t boil over. This is living in the twenty-first century.

SOURCES

EXTERIOR

Windows: Barrons, Gaithersburg, MD

Doors: Barrons, Gaithersburg, MD

Cedar shingles: Barrons, Gaithersburg, MD

Double milled pine siding: Barrons, Gaithersburg, MD

Slate roof: Roof Center, Vienna, VA

Flagstone stoop: Sislars Stone, Falls Church, VA

Landscaping: Gardenwise, Inc., Washington DC

LEFT: In the kitchen, brick tile with bull nose trim, cabinetry and hardware evokes the thirties ambiance of the house.



A Butler's pantry off the rear hallway is essential for entertaining large numbers. It keeps the numbers of cocktail glasses, linens, platters and oversized serving pieces out of the kitchen and daily life.



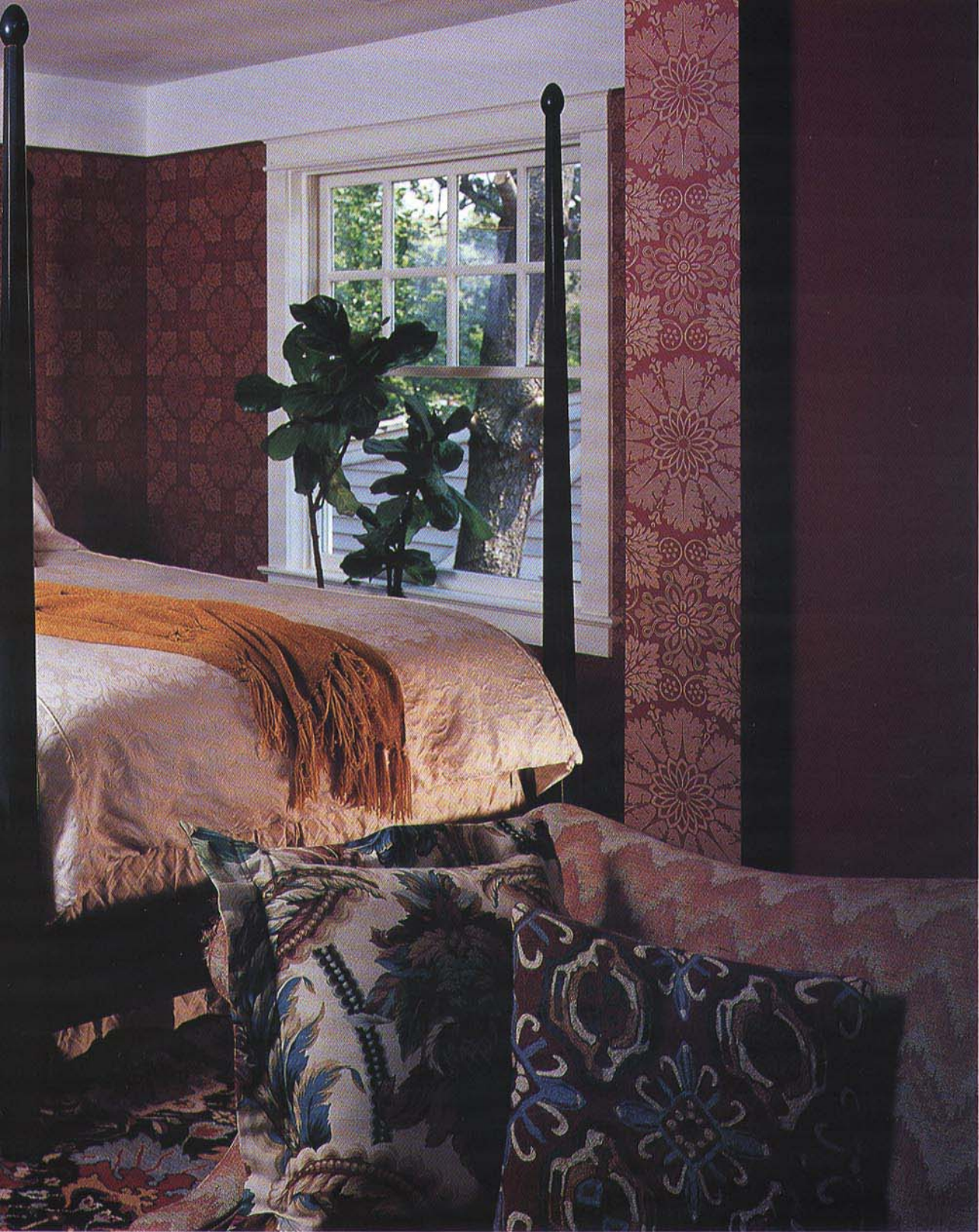


GREAT ROOM

Sofa and Chairs: Sofas by Design, Arlington, VA
Cocktail table: Bloomingdales, McLean, VA
Area rug: Fairfax Floors, Merrifield, VA
Floors: Atlas Floors, Gaithersburg, MD
Painting: Mark Horton, Osseo, WI
Fireplace surround: Sisler's, Falls Church, VA

KITCHEN

Cabinets: St. Clair, Alexandria, VA
Hardware: Restoration Hardware, McLean, VA
Tile backsplash: Dal Tile, Chantilly, VA
Bullnose tile trim: Jud Tile, Vienna, VA
Granite: Marmara Corp., Fairfax, VA
Appliances: St. Claire Appliance, Alexandria, VA



BEDROOM

Duvet Cover: Bloomingdale's, McLean, VA
Pillows: ABC Carpet and Home, NY
Wallpaper: J. Lambeth, Washington, DC
End table and chair: Sofas by Design,
Arlington, VA
Rug: Trocadero, Washington, DC

ABOVE: William Morris wallpaper is used in the guest bedroom, "very much in keeping with a historic reference we are making at every juncture without being tedious about it." A seating area occupies a dormer.